

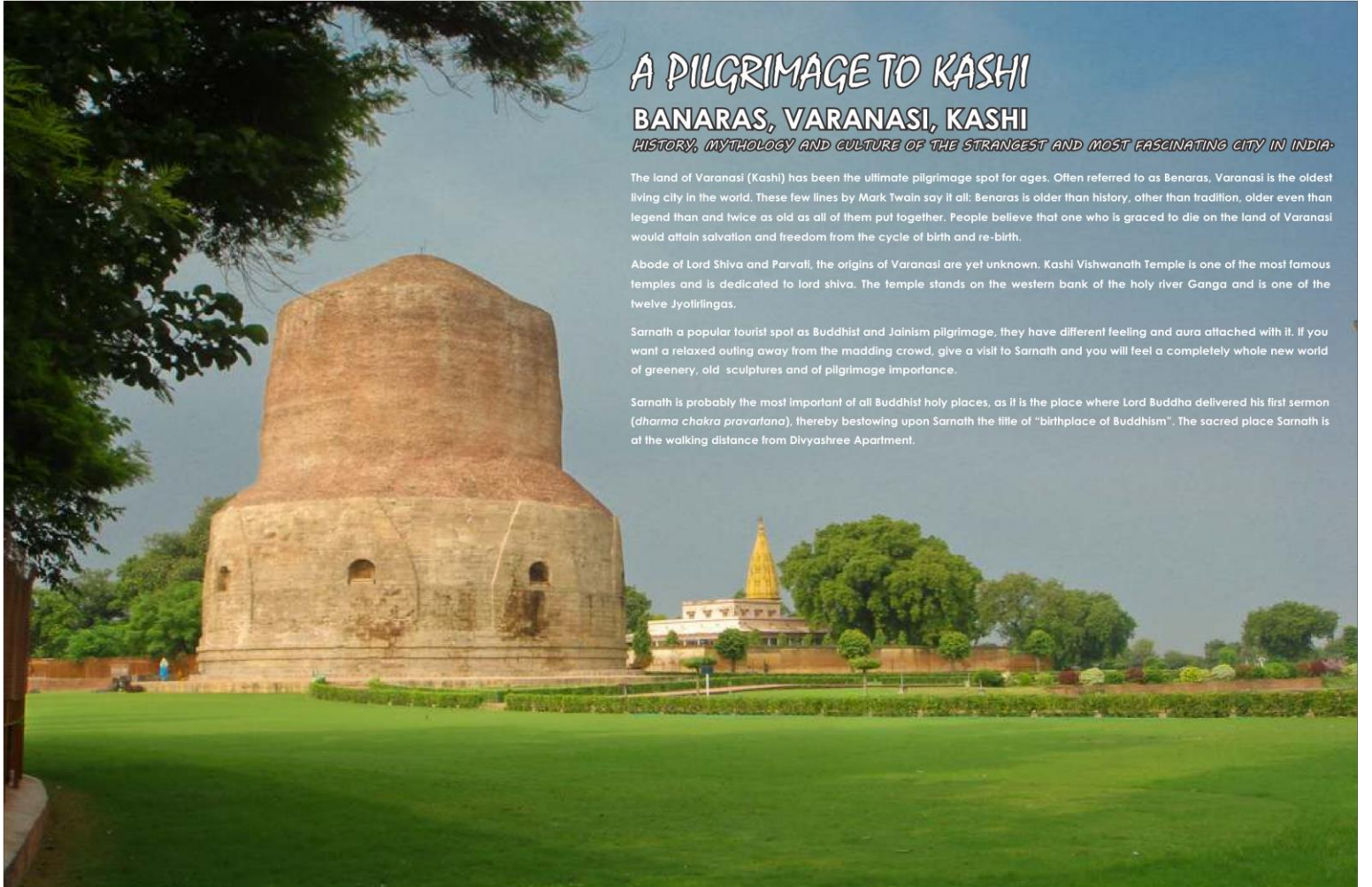


*Turning Your Dreams  
into reality.....*



**DIVYASHREE**  
Apartment

DEVELOPER  
**LAKSHMISHREE GROUP OF COMPANIES**



## A PILGRIMAGE TO KASHI BANARAS, VARANASI, KASHI

*HISTORY, MYTHOLOGY AND CULTURE OF THE STRANGEST AND MOST FASCINATING CITY IN INDIA*

The land of Varanasi (Kashi) has been the ultimate pilgrimage spot for ages. Often referred to as Benaras, Varanasi is the oldest living city in the world. These few lines by Mark Twain say it all: Benaras is older than history, older than tradition, older even than legend than and twice as old as all of them put together. People believe that one who is graced to die on the land of Varanasi would attain salvation and freedom from the cycle of birth and re-birth.

Abode of Lord Shiva and Parvati, the origins of Varanasi are yet unknown. Kashi Vishwanath Temple is one of the most famous temples and is dedicated to lord shiva. The temple stands on the western bank of the holy river Ganga and is one of the twelve Jyotirlingas.

Sarnath a popular tourist spot as Buddhist and Jainism pilgrimage, they have different feeling and aura attached with it. If you want a relaxed outing away from the madding crowd, give a visit to Sarnath and you will feel a completely whole new world of greenery, old sculptures and of pilgrimage importance.

Sarnath is probably the most important of all Buddhist holy places, as it is the place where Lord Buddha delivered his first sermon (*dharma chakra pravartana*), thereby bestowing upon Sarnath the title of "birthplace of Buddhism". The sacred place Sarnath is at the walking distance from Divyashree Apartment.

## SPECIFICATION:

**FLOORING:** 2' X 2' Vitrified tiles in living, bedroom, dining and kitchen. Anti-skid ceramic tiles in balcony and bathrooms.

**Doors & Windows:** Apartment door & windows are made by hard wood finished with paint/polish.

**Kitchen Fittings:** Granite kitchen counter. 2' wall tiles (DADO) above kitchen counter. Stainless steel sink.

**Painting:** Long lasting weather proof paints for building exteriors. POP finished interior walls and ceiling.

**Electrical Fittings:** Concealed conduit with copper wiring for electrical fittings through the apartment. 3 phase connection for all apartment. Inverter connection in all switch boards. Modular switches provided for all apartment. Connection for washing machine in one balcony.

**Bathroom:** C.P. fitting jaguar or equivalent. Sanitary ware of parryware, hindware and equivalent.

**Power:** Power back-up generator for common area lighting, lifts, water pump and also flats(on chargeable basis). Separate transformer for the entire area.

**Water:** Deep borewell for continuous water supply. Back-up generator for pumps.

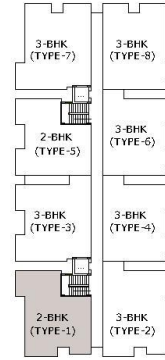
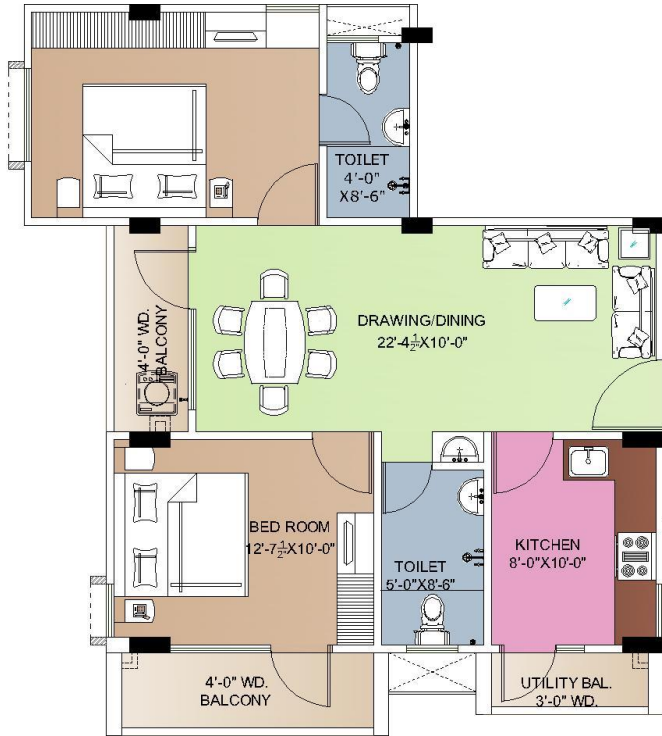
**High speed lifts:** Twin passenger lifts. Power backup from generator to ensure uninterrupted operations of lifts.

**Parking:** Covered car parking at stilt.

**Intercom and Cable TV:** Intercom facility consolidated with guard house. Provision of cable TV wiring.

## Special Features:

- Children Park
- Earthquake resistant RCC framework structure.
- 24 hours security from single entry exit.
- Vastu compliant flats & projects.
- Well ventilated flats for Natural light and cross ventilation



(TYPE-1) 2-BHK

SUPER BUILTUP AREA=1066.66SQ.FT.



SCALE

DRAWN

DATE

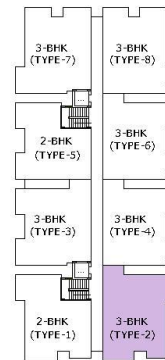
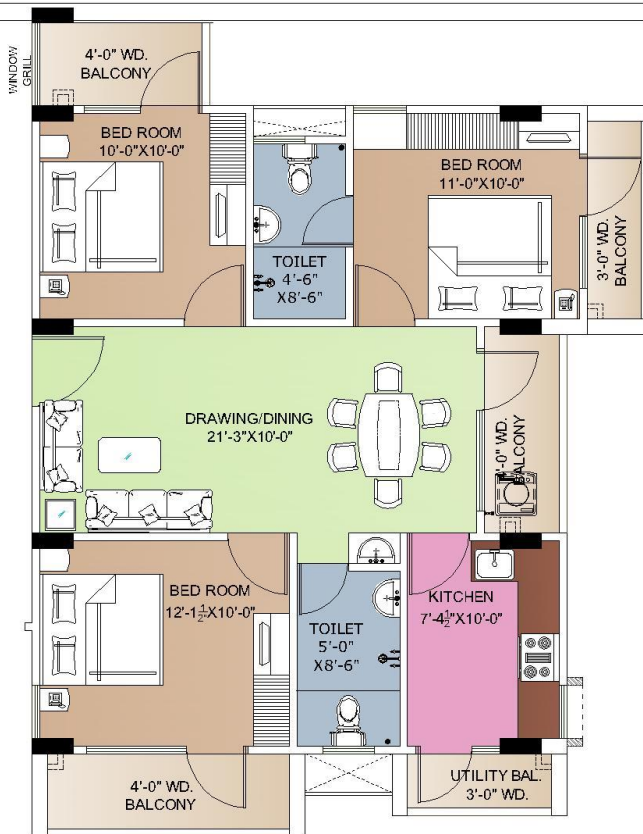
CHECKED

1/2021

C.P. CHAWLA

PROPOSED GROUP HOUSING AT SARNATH, VARANASI.

**S R I S H T I**  
 CIVIL ENGINEERING & ARCHITECTURE  
 5, CHANDRIKA COLONY,  
 VARANASI - 221010  
 P. NO. 10. 220190



(TYPE-2) 3-BHK

SUPER BUILTUP AREA =1215.28 SQ.FT.



SCALE

DRAWN

DATE

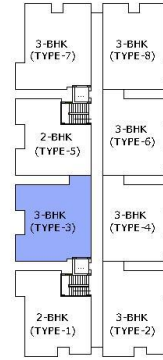
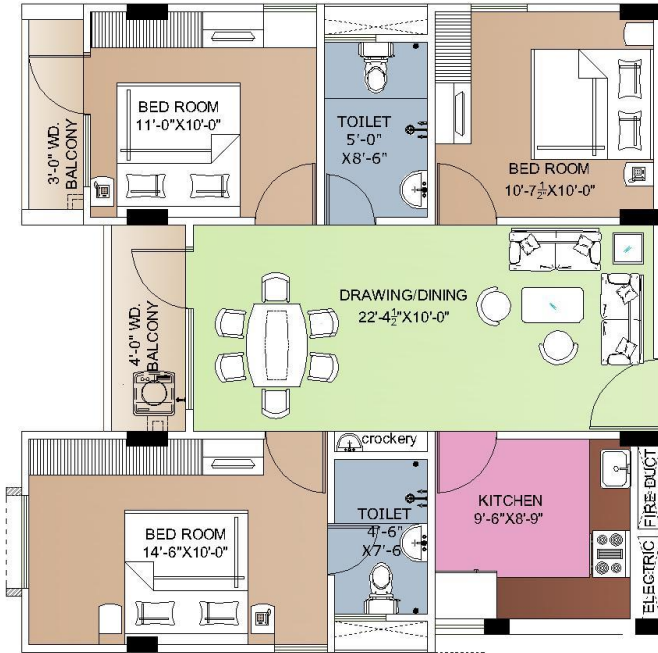
CHECKED

1/2021

C.P. CHAWLA

PROPOSED GROUP HOUSING AT SARNATH, VARANASI.

**S R I S H T I**  
 CIVIL ENGINEERING & ARCHITECTURE  
 5, CHANDRIKA COLONY,  
 VARANASI - 221010  
 P. NO. 10. 220190



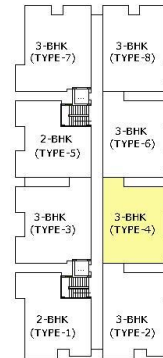
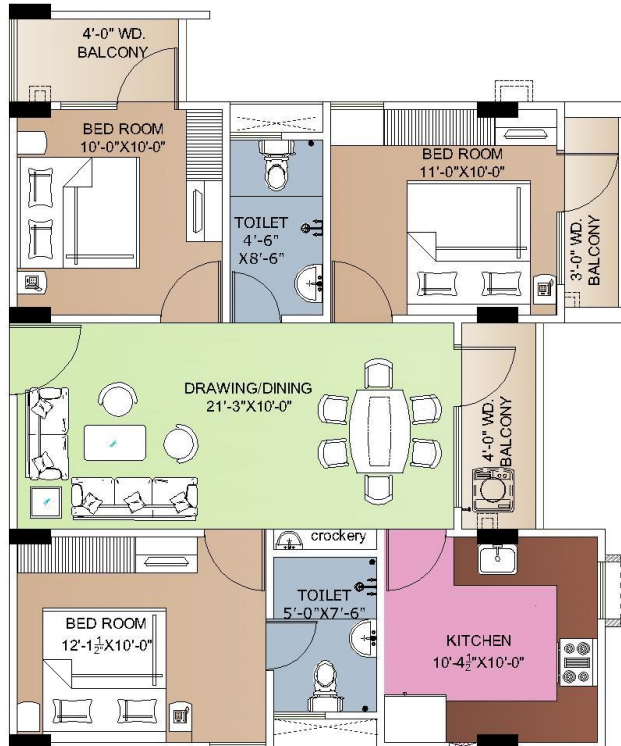
(TYPE-3) 3-BHK

SUPER BUILTUP AREA = 1164.00 SQ. FT.

SCALE	DRAWN
DATE	ENGINEER
1/600/16	C.P. CHAWLA

PROPOSED GROUP HOUSING AT SARNATH, VARANASI.

**S R I S H T I**  
 CONSULTANTS & ARCHITECTS  
 5, CHANDRIKA COLONY,  
 VARANASI - 221010  
 P. NO. 10. 222990



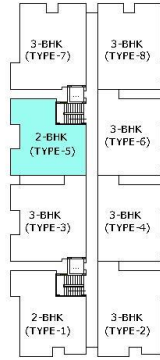
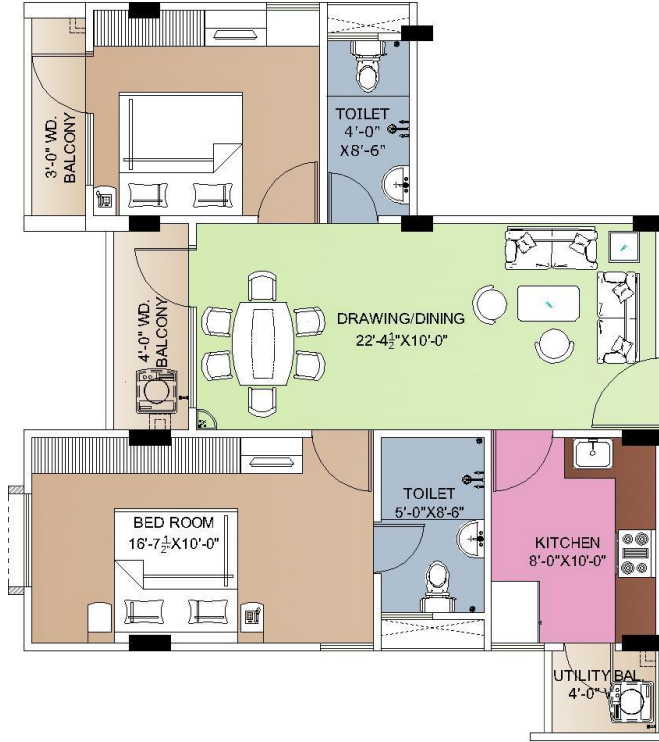
(TYPE-4) 3-BHK

SUPER BUILTUP AREA = 1161.00 SQ. FT.

SCALE	DRAWN
DATE	ENGINEER
1/600/16	C.P. CHAWLA

PROPOSED GROUP HOUSING AT SARNATH, VARANASI.

**S R I S H T I**  
 CONSULTANTS & ARCHITECTS  
 5, CHANDRIKA COLONY,  
 VARANASI - 221010  
 P. NO. 10. 222990



(TYPE-5) 2-BHK

SUPER BUILTUP AREA = 1050.00 SQ. FT.



SCALE:

DRAWN

DATE:

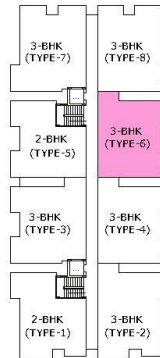
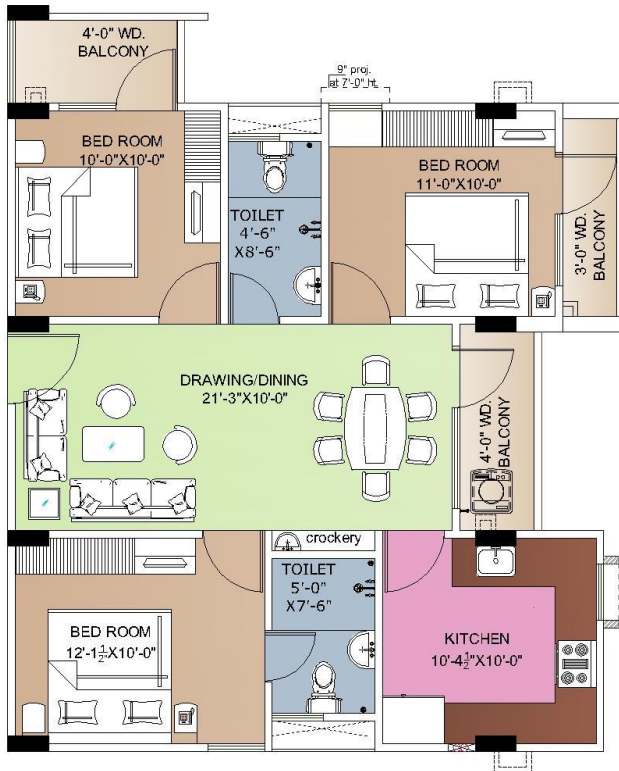
ENGINEER

1992/18

C.P. CHAWLA

PROPOSED GROUP HOUSING AT SARNATH, VARANASI.

**S R I S H T I**  
REG. NO. 101/1992  
**5, CHANDRIKA COLONY,**  
**VARANASI - 221010**  
P. NO. 101/1992



(TYPE-6) 3-BHK

SUPER BUILTUP AREA = 1161.00 SQ. FT.



SCALE:

DRAWN

DATE:

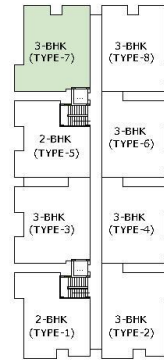
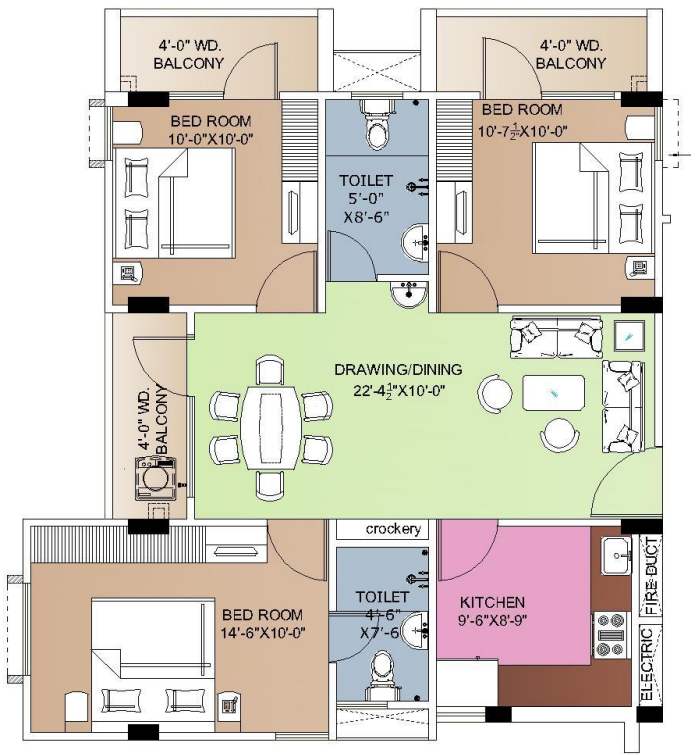
ENGINEER

1992/18

C.P. CHAWLA

PROPOSED GROUP HOUSING AT SARNATH, VARANASI.

**S R I S H T I**  
REG. NO. 101/1992  
**5, CHANDRIKA COLONY,**  
**VARANASI - 221010**  
P. NO. 101/1992



(TYPE-7) 3-BHK

SUPER BUILTUP AREA = 1225.00 SQ. FT.

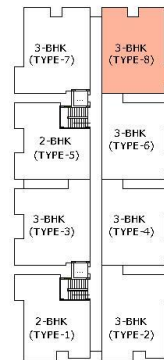
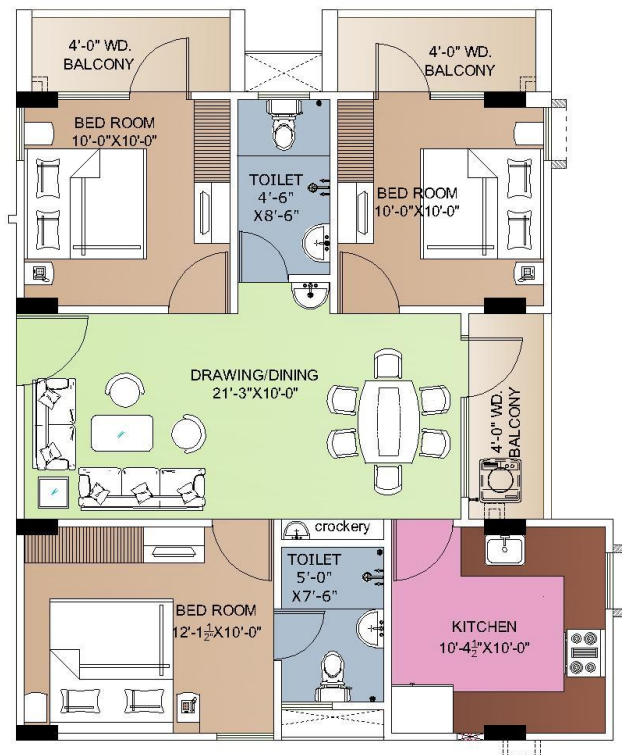


SCALE:  
DATE:  
'06/16

DRAWN:  
CHECKED:  
C.P. CHAWLA

PROPOSED GROUP HOUSING AT  
SARNATH, VARANASI.

**S R I S H T I**  
C/O. S. CHANDRIKA COLONY  
5, CHANDRIKA COLONY,  
VARANASI - 221010  
P. NO. 10. 222990



(TYPE-8) 3-BHK

SUPER BUILTUP AREA = 1174.00 SQ. FT.



SCALE:  
DATE:  
'06/16

DRAWN:  
CHECKED:  
C.P. CHAWLA

PROPOSED GROUP HOUSING AT  
SARNATH, VARANASI.

**S R I S H T I**  
C/O. S. CHANDRIKA COLONY  
5, CHANDRIKA COLONY,  
VARANASI - 221010  
P. NO. 10. 222990

## NEAR BY LANDMARKS

- Sarnath Temple, Museum & Zoo - Walking Distance
- JHV Mall - 5 km.
- Railway Station - 6 km.
- Babatpur Airport - 24 km.



### DEVELOPER

|| श्री || LAKSHMISHREE REALESTATE & LANDSCAPER (P) LTD.  
57, 2nd Floor, Gandhi Nagar  
Sigra, Varanasi-221010

### VASTU

Shri Guru Ji  
D. K. Vaidya  
Varanasi

### ARCHITECT

Srishti  
Mr. C.P. Chawla  
Varanasi

### SITE ADDRESS

S 10/91, A-2  
Havelia Chauraha  
Sarnath, Varanasi-221007

**NOTE :** This brochure is a presentation and not a legal document. All drawings, amenities, facilities etc. Shown in this brochure are subject to change as per the approval from the respective authorities. The final discretion remains with the developer.